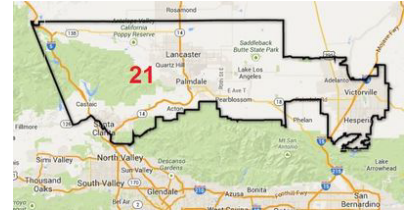




Senate District 21

Senator
Scott Wilk



The economic benefits of California's climate policies in-district to date:



\$2.4 Billion

Documented in-district investment in renewable energy, energy efficiency, transportation, and other climate projects



7,300 Jobs

In the local advanced energy economy



\$76.6 Million

Cap and Trade funds allocated to the district



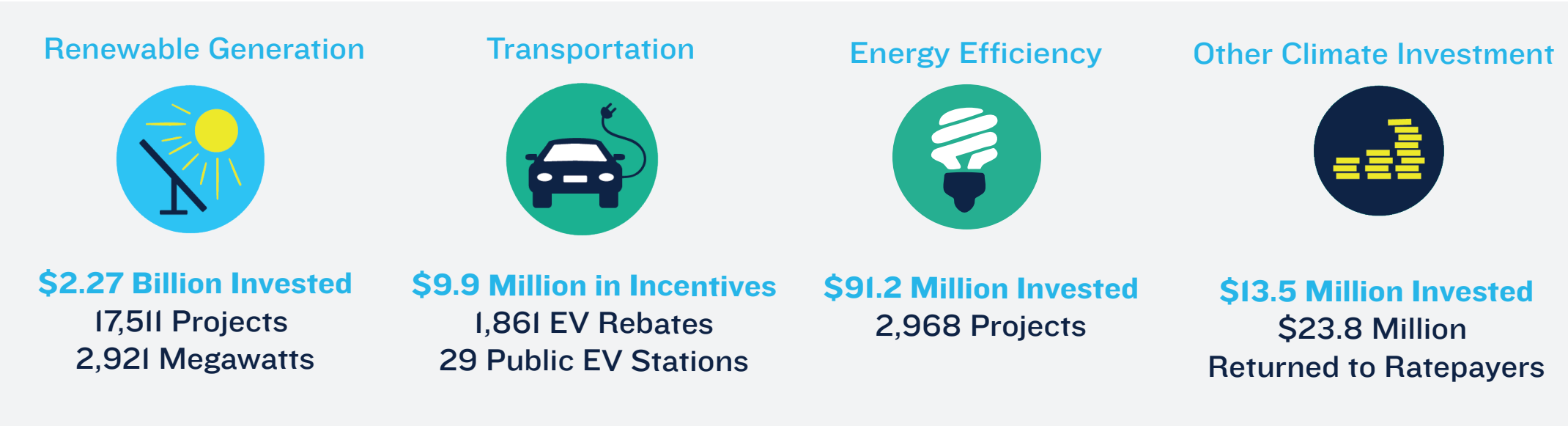
96% of Cap and Trade funds
benefit disadvantaged communities



151,644 Cars off the road
emission reduction equivalent

As of April 2017

Breakdown of benefits from all climate policies to date:



In-district Cap and Trade fund distribution:

Program Name	Total Dollars Implemented	GHG Reductions (MTCO2e)	Number of Projects	# of Projects Benefitting Disadvantaged Communities	Dollars Benefitting Disadvantaged Communities
District 21					
Clean Vehicle Rebate Project (CVRP)	2701059	57886	1346	308	\$ 627,514
Enhanced Fleet Modernization Program Plus-Up	4000	8	1	1	\$ 4,000
Hybrid and Zero-Emission Truck and Bus Voucher Incentive Project	286606	803	9	0	\$ -
Low Carbon Transit Operations Program	159483	23956.22	2	1	\$ 118,796
Organics Composting/Digestion Grants	2595080	184300	1	1	\$ 2,595,080
Single-Family Solar PV	73352	316	6	6	\$ 73,352
Single-Family/Small Multi-Family Energy Efficiency and Solar Water Heating	22541	95	8	8	\$ 22,541
Statewide Water Efficiency Enhancement Program	350000	10292	3	0	\$ -
Districts 16,21					
Low Carbon Transit Operations Program	314052	402.82	3	3	\$ 314,052
Districts 16,21,23					
Low Carbon Transit Operations Program	461683	42.17	1	1	\$ 461,683
Districts 18,19,20,21,22,23,24,25,27,29,31,32,34,36,37					
Low Carbon Transit Operations Program	2051727	116572.93	1	1	\$ 2,051,727
Transit and Intercity Rail Capital Program	41181000	137395	1	1	\$ 41,181,000
Districts 18,21,24,25,26,27					
Transit and Intercity Rail Capital Program	24403000	185206	1	1	\$ 24,403,000
Grand Total	\$ 74,603,583	717,275	1383	332	\$ 71,852,745

Sources:

Job data: DOE U.S. Energy and Employment Report, 2017 | CO2 Equivalents: <https://www.epa.gov/energy/greenhouse-gas-equivalencies-calculator> | Total Investments: Kevala Analytics |

GGRF data: <http://www.arb.ca.gov/cc/capandtrade/auctionproceeds/auctionproceeds.htm>

Other climate investment includes water projects, recycling programs, forestry initiatives, utility ratepayer credits, and dairy projects.