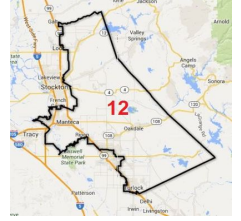




Good for the Economy.
Good for the Environment.

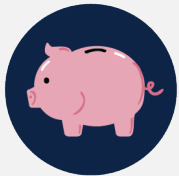
Assembly District 12

Assembly Member Heath Flora



California's climate leadership attracts investment and creates jobs.

The economic benefits of California's climate policies in-district:



\$375 Million

Documented in-district investment in renewable energy, energy efficiency, clean transportation, and other GHG mitigation projects



6,495 Jobs

In the district's clean energy economy



\$8 Million

Cap and Trade funds implemented in district



79% of Cap and Trade Funds

Benefit disadvantaged communities



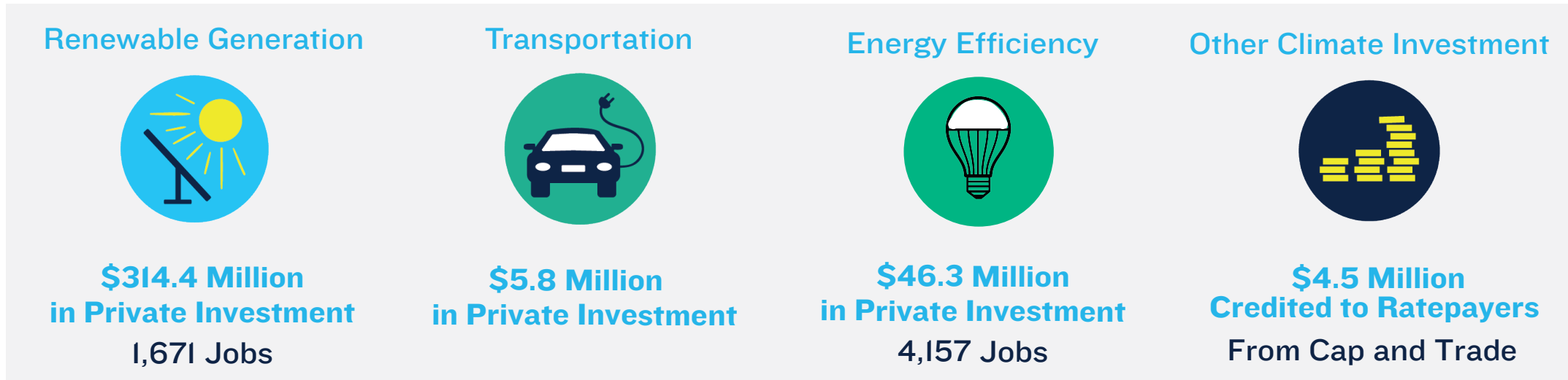
24,217 Equivalent Car Emissions Avoided

Avoided equivalent greenhouse gas emissions resulting from GGRF funded projects

Created July 2018

Jobs, public investment (GGRF), and emissions data current through 2017; private investment data current through 2016; climate credit data from 2015

Breakdown of in-district benefits from climate policies to date:



In-district Cap and Trade dollars implemented through 2017:

District 12, Heath Flora				
Assembly District & Program Name	Dollars Implemented	GHG Reductions (MTC02e)	Number of Projects	Dollars to Disadvantaged Communities
Clean Vehicle Rebate Project	\$ 1,530,891	22,248	649	\$ 1,351,435
Enhanced Fleet Modernization Program Plus-Up	\$ 734,417	581	113	\$ 734,417
Hybrid and Zero Emission Truck and Bus Voucher Incentive Project	\$ 114,582	277	4	\$ 114,582
Hybrid and Zero-Emission Truck and Bus Voucher Incentive Project	\$ 23,000	92	1	\$ 23,000
Large Multi-Family Energy Efficiency and Renewables	\$ 202,865	967	104	\$ 202,865
Recycled Fiber, Plastic, and Glass Grant Program	\$ 1,000,000	41,900	1	\$ -
Single-Family Energy Efficiency and Solar PV	\$ 144,845	719	104	\$ 144,845
Single-Family Solar PV	\$ 105,852	253	5	\$ 105,852
Single-Family/Small Multi-Family Energy Efficiency and Solar Water Heating	\$ 134,905	1,309	167	\$ 134,905
State Water Efficiency and Enhancement Program	\$ 89,202	159	1	\$ -
State Water Efficiency Program	\$ 308,916	443	4	\$ -
Vehicle Retirement and Replacement	\$ 50,000	145	16	\$ 50,000
Grand Total	\$ 8,300,702	113,094	2,980	\$ 6,573,128

This chart displays a subset of Cap and Trade funded projects in this district. To view the full list of projects please visit: <http://www.arb.ca.gov/cc/capandtrade/auctionproceeds/auctionproceeds.htm>

Sources:

Job data: 2018 United State Energy Employment Report; <https://www.usenergyjobs.org/> | Private Investment data, California climate credits returned to rate payers, and breakdown of benefits from all climate policies to date: Kevala Analytics | GGRF and emission reductions data: <http://www.arb.ca.gov/cc/capandtrade/auctionproceeds/auctionproceeds.htm>
CO2 Equivalencies: <https://www.epa.gov/energy/greenhouse-gas-equivalencies-calculator>