



Good for the Economy.  
Good for the Environment.

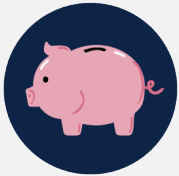
# Assembly District 28

## Assembly Member Evan Low



### California's climate leadership attracts investment and creates jobs.

The economic benefits of California's climate policies in-district:



## \$368 Million

Documented in-district investment in renewable energy, energy efficiency, clean transportation, and other GHG mitigation projects



## 4,804 Jobs

In the district's clean energy economy



## \$48 Million

Cap and Trade funds implemented in district



## 67% of Cap and Trade Funds

Benefit disadvantaged communities



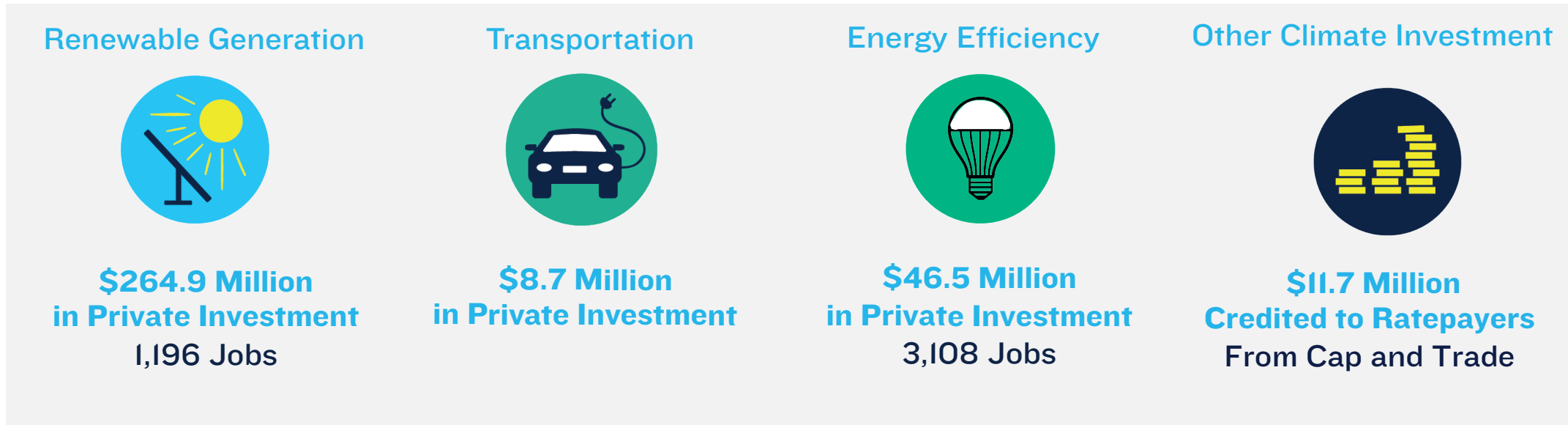
## 225,873 Equivalent Car Emissions Avoided

Avoided equivalent greenhouse gas emissions resulting from GGRF funded projects

Created July 2018

Jobs, public investment (GGRF), and emissions data current through 2017; private investment data current through 2016; California Climate Credit data from 2015

## Breakdown of in-district benefits from climate policies to date:



## In-district Cap and Trade dollars implemented through 2017:

District 28, Evan Low				
Assembly District & Program Name	Dollars Implemented	GHG Reductions (MTC02e)	Number of Projects	Dollars to Disadvantaged Communities
Clean Vehicle Rebate Project	\$ 17,459,914	282,254	7,590	\$ 1,748,018
Hybrid and Zero Emission Truck and Bus Voucher Incentive Project	\$ 120,890	285	5	\$ -
Water Energy Grant Program	\$ 104,081	6,391	733	\$ -
<b>Grand Total</b>	<b>\$ 48,370,730</b>	<b>1,054,825</b>	<b>8,457</b>	<b>\$ 32,433,863</b>

This chart displays a subset of Cap and Trade funded projects in this district. To view the full list of projects please visit: <http://www.arb.ca.gov/cc/capandtrade/auctionproceeds/auctionproceeds.htm>

### Sources:

Job data: 2018 United State Energy Employment Report; <https://www.usenergyjobs.org/> | Private Investment data, California climate credits returned to rate payers, and breakdown of benefits from all climate policies to date: Kevala Analytics | GGRF and emission reductions data: <http://www.arb.ca.gov/cc/capandtrade/auctionproceeds/auctionproceeds.html>

CO2 Equivalencies: <https://www.epa.gov/energy/greenhouse-gas-equivalencies-calculator>